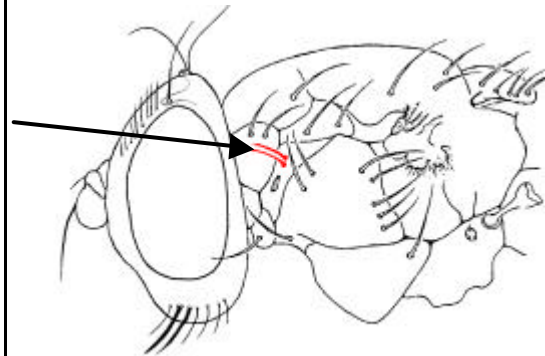


**Lonchaeidae - Key to European Genera**

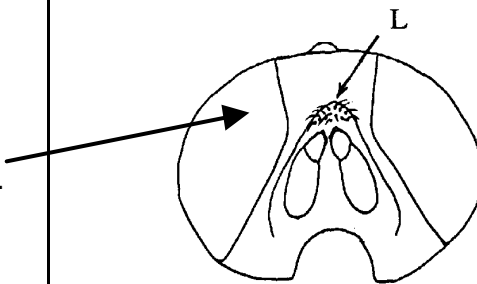
© Iain MacGowan 2004

1. Post stigmal hairs or bristle(s) present on plate above pro-thoracic stoma. In the majority of European species 1-7 strong vibrissal bristles on the jowls below the eyes. Lunule (above antennal bases) with at least some obvious bristles on the upper margin. Abdomen in male with six sternites . . .  
*Subfamily Dasiopinae* .....  
***Dasiops*** Rondani

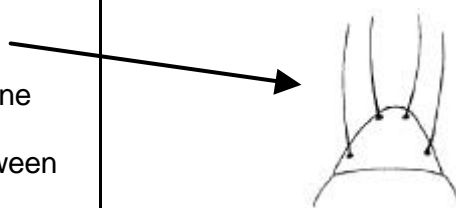


Post stigmal hairs or bristles absent, abdomen in male with five sternites .....  
*Subfamily Lonchaeinae* .... 2

2. Lunule ( L ) bare .....  
*Tribe Earomyiini* ..... 3
- Lunule with hairs or bristles .....  
*Tribe Lonchaeini* ..... 6



3. Margin of scutellum with only four bristles, no intermediate hairs .....  
***Protearomyia*** McAlpine

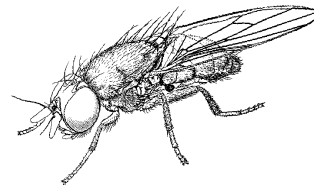


Margin of scutellum with hairs between the four strong bristles ..... 4

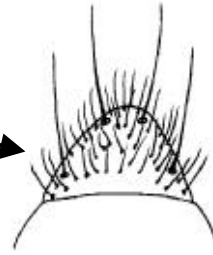
4. Body colour brilliant golden green or bronze blue. Eyes bare, hairs on frons sparse and short, anepisternum with obvious anterior and posterior bristles, katepisternum with a single bristle .....  
***Lamprolonchaea*** Bezzi  
 (1 species mainly Mediterranean)



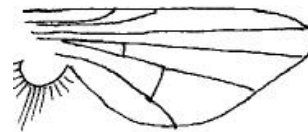
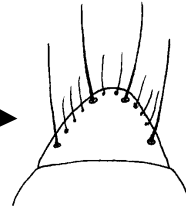
Body colour not as above but shining bluish black, hairs on frons usually dense and long, katepisternum usually with several strong bristles ..... 5



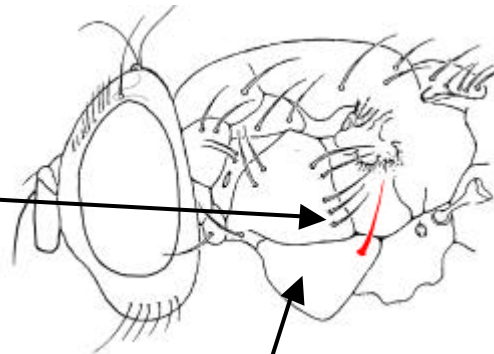
5. Margin of scutellum with hairs anterior to the lateral strong bristles. A few stigmatal bristles present, anepisternum with anterior bristles weak or absent, cheek and parafacials wide, squamal fringes whitish ..... **Chaetolonchaea** Czerny



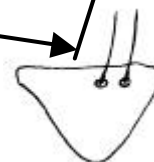
Margin of scutellum without hairs anterior to the lateral bristles, anepisternum with anterior bristles long and strong, cheeks usually narrower, squamal fringes (at base of wing) always brown ..... **Earomyia** Zetterstedt



6. Katepisternum with one strong bristle ..... **Lonchaea** Fallen



Katepisternum with two strong bristles ..... 7.



7. First antennal flagellomere short, not reaching mouth margin. Arista bare or at most shortly pubescent; Prosternum (between front coxae) bare, abdominal sternite 1 with hairs. ....  
***Setisquamalonchaea*** Morge

Arista with plumulose hairs  
 first antennal flagellomere long, reaching mouth margin.,  
 prosternum with hairs; abdominal sternite 1 bare ..... ***Silba*** Macquart  
 (Southern Europe)

